

CHART

27 Aug – 30 Aug 2026

Open Call
CHART PUBLIC 2026

CHART

27 Aug – 30 Aug 2026

PARTNERS

P. 3 - P. 4

CHART

P. 5 - P. 6

CHART PUBLIC
2026

P. 7 - P. 10

JURY

P.11-P.12

PROGRAMME /
FUNCTION

P.13 - P.16

CONTEXT

P.17 - P.22

REFERENCES

P.23 - P.24

REQUIREMENTS

P.25 - P.26

SUBMISSION

P.27 - P.28

KEY DATES

P.29 - P.30

CONTACT

P.31 - P.32

Open Call
CHART PUBLIC 2026

PARTNERS

CHART would like to express gratitude towards each of the organisations, partners and sponsors who have helped to realise the project this year;

CHART Public 2026 is made possible by the generous support of **Københavns Kommune & Det Obelske Familiefond.**



DET
OBELSKE
FAMILIEFOND

CHART

27 Aug – 30 Aug 2026

- CHART 2026 will take place from: **27 August - 30 August** at Charlottenborg in Copenhagen.
- CHART Public 2026 Open Call will take place from: **16 April - 26 April**.
- The winner of CHART Public 2026 will be announced on: **13 May**.
- The winning proposal will be *built / installed / produced* (with all team members present): **10 August - 23 August**.
- The winning proposal will be taken down (with all team members present): **31 August - 02 September**.

CHART is the leading Nordic art fair, an important event for contemporary art in Copenhagen and an editorial platform focusing on the region's art scene. Each year we bring together the most established galleries in the region, alongside younger galleries with more emerging programmes, to exhibit curated presentations inside Kunsthall Charlottenborg.

Welcoming inspiring professionals and art enthusiasts alike, CHART also includes a generous public programme of talks, performances, music, architecture and a sculpture exhibition inside the historical amusement park Tivoli Gardens.

CHART 2026 will place a particular emphasis on "Shared Realities". Responding to a need for connectedness in a time in which our experiences are increasingly fragmented, individualised and shaped by digital influences, CHART Public explores how temporary installations can create new forms of belonging in public space.

- *"With CHART Public, we aim to highlight our shared realities - the transitional spaces between buildings that we usually pass through on our way from A to B.*

These spaces offer an opportunity to pause, interact, and connect. Our goal is to transform them into vibrant gathering spots in one of Copenhagen's most iconic public courtyards"

Julie Quottrup Silbermann
Director of CHART

CHART PUBLIC 2026

For 2026, we are excited to announce the return of CHART Public. CHART Public combines a total installation inside the courtyards at Charlottenborg, with the public programme that will unfurl within this space. In this second edition of the open call competition, we are inviting bold thinkers and visionary makers to submit proposals for innovative stagings that will reimagine the courtyards at CHART.

CHART Public consists of 2 parts—an open call for the staging of public space in the courtyard of Charlottenborg, and a broad, publicly accessible program curated by CHART that unfolds within the staged space. The brief is what you are reading right now.

Shape the visual experience of CHART 2026

CHART is inviting scenographers, designers, architects, and/or artists - to reimagine the entire visual and spatial experience within the two courtyards of Charlottenborg. From the moment guests arrive at CHART, your concept will shape how they see, feel, and interact with the art fair and with each other within the public areas of CHART. See p. 9-10 for examples of previous years' wow-factor projects and atmosphere in the courtyards. We are looking for a proposal that:

- **Transforms CHART's public environment into a cohesive visual narrative.**
- **Has an immediate and distinct wow-factor.**

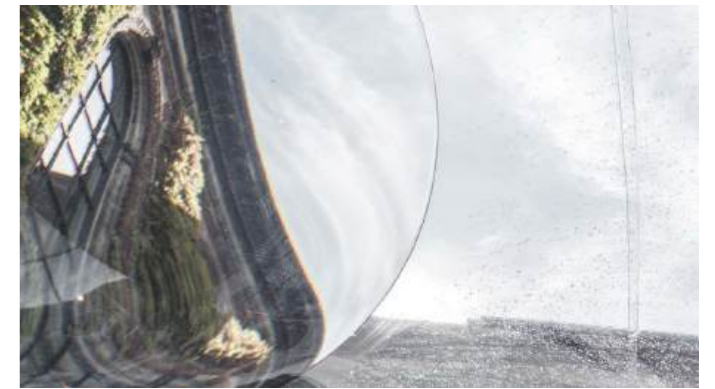
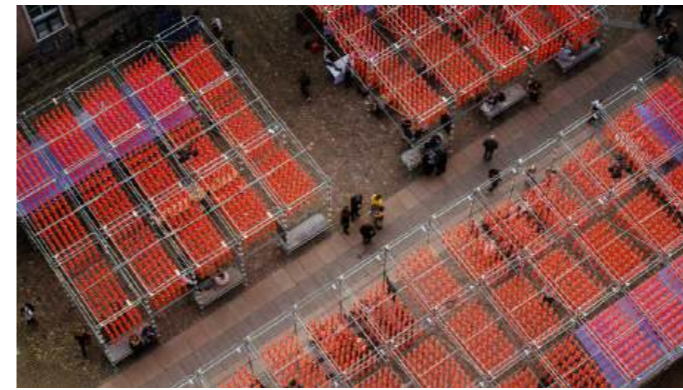
- **Enhances flow, orientation, and engagement across all public areas and throughout the programme.**
- **Pushes boundaries of innovative, and impactful design.**
- **Demonstrates a considered approach to material circularity, ensuring components are reusable, modular, and designed for disassembly.**

Whether you work solo or as part of a cross disciplinary collective, this is your chance to create an unforgettable experience for the guests of the art fair and set the tone for future editions of CHART Public.

The competition

A jury of 3 members (see p. 11-14 with more details on the jury) will select 1 winning proposal which will be awarded first prize, based on strength of concept, execution and materials. This project will be built / installed / produced in the courtyard of Charlottenborg and become the overall spatial and visual experience of CHART 2026.

In order for the jury to choose a winner, there will be a day of interviews with a selected group of finalist teams on 04 May from 10:00 - 14:00. Each team will get 5-10 min. to present their project followed by a round of questions from the jury. The projects which will not be awarded first prize after this round of interviews will be put online on the webpage of CHART as 'honourable mentions'.



JURY



Kim Lenschow is an Copenhagen based architect whose practice, *Office Kim Lenschow*, prioritizes material poetics and authentic engagement with our surroundings. Since graduating from the *Royal Academy* in 2014, he has earned prestigious honors, including the *Henning Larsen Prize* (2022) and the *Franciska Clausen Medal* (2019).

Lenschow is distinguished by his critical assessment of industry norms and a research-led approach to modern building practices. As an educator at the *Royal Academy*, he bridges the gap between conceptual artistry and technical innovation, applying his expertise to both innovative new constructions and the sensitive transformation of architectural heritage.

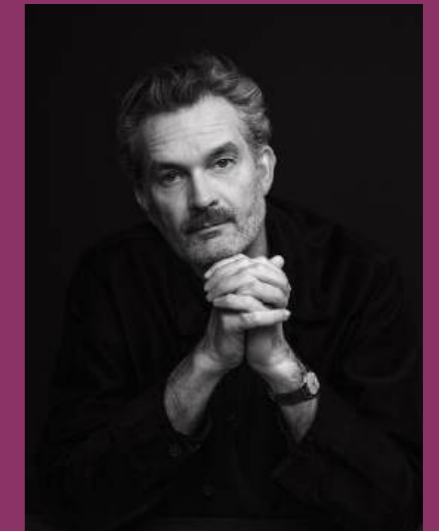
Katrine Morel is the Head of Architecture & Spatial Design at *Surface Club*, an interdisciplinary design practice based in Stockholm and Malmö. She oversees projects from ideation to execution, blending creativity with cutting-edge material innovations across architecture, spatial design, and furniture.

Katrine holds a degree in architecture from *Royal Academy*. Before joining *Surface Club*, she worked at *TABLEAU*, a multi-disciplinary design studio and concept store in Copenhagen. Over the past three years, she has served as the project manager for *CHART Architecture* - now *CHART Public*, a concept she helped develop.



Peter Bur Andersen is the founder and Creative Director of *BRIQ*, established in 2008 with a vision to shape our future cities and create meaningful urban experiences. At *BRIQ*, he has pioneered a place-based approach to urban development, working closely with operators, local stakeholders, and communities. He leads projects from concept to realisation, integrating commercial strategies with local identity, culture, and community engagement. Previously, Peter spent years developing retail and hospitality concepts internationally, gaining insight into how commerce shapes urban experiences. His work balances commerce, culture, and public space creating vibrant neighbourhoods.

Several of *BRIQ*'s projects, including *Guldbergsgade*, *Carlsberg Byen*, and *Århusgadekvarteret*, have received national and international recognition for their dynamic urban environments.



PROGRAMME / FUNCTION

For CHART 2026, 1 winning proposal will be built / installed / produced in the courtyard of the Royal Danish Academy of Fine Arts + the courtyard of Charlottenborg (see p. 17-18 with map overlooking courtyards and the programme).

The winning proposal will be an integral part of the courtyards. Together with a number of performances and live music, it will create an important setting for various interactions during the 4 day event period of CHART (27 - 30 August).

In the following paragraphs we describe the requirements, the programme of CHART and lastly what we expect you to deliver as part of your proposal for the CHART Public 2026 open call:

Requirements and guidelines

We encourage participants to consider how the proposal might shape a vibrant setting while also taking the overall programme and functions of the courtyards into consideration. The following elements and focus areas are central to the project (along with the bulletpoints on p. 7-8 'CHART Public'):

- **Functionality:** The projects must create a coherent experience in Charlottenborg's historic courtyard environment. The solutions should integrate food stalls (scaffolding structures designed and constructed by CHART), space for music and performances, and other elements that activate the courtyard as a social and cultural gathering point.

- **Navigation:** How can Charlottenborg's courtyard be staged so that visitors can easily and intuitively find their way to the art fair, Kapellet, and the Talks stage in Festsalen? (See p. 17-20). The solution must offer clear, experiential guidance through the space and create a natural connection between Kongens Nytorv and the courtyard. The experience starts already at Kongens Nytorv, from where visitors are naturally led further into the courtyard.
- **Sustainability:** The projects must think sustainably with a focus on environmentally friendly materials and the durability of the installations. CHART emphasises promoting sustainable and circular solutions to minimise environmental impact.
- **Accessibility and inclusion:** The space must be accessible and usable for people of all ages and with all accessibility requirements.

Programme of CHART 2026

CHART is more than an art fair—we are an event that embraces art and culture in a broad sense, bringing together the Nordic art and cultural scene once a year at Charlottenborg. Our goal is to create space for art to unfold and be experienced by as wide an audience as possible. In addition to the CHART art fair, we therefore present an extensive, publicly accessible programme:

- **Talks programme:** The Talks programme introduces some of the most inspiring Danish and Nordic artists whose works can be experienced at CHART 2026. The program consists of talks that touch on socially relevant topics and invite the audience to a subsequent debate.

Location: Festsalen, first floor (see p. 17-20)

- **Performance programme:** CHART Public offers an ideal setting for performances, where public space becomes part of the staging, and where interaction between artist and audience can unfold in ways that are not possible within more traditional exhibition formats. The area around Charlottenborg and its courtyards provides an inspiring and informal framework where performance art can thrive, engage, and move people in new ways. It's a space where the boundaries between art, audience, and surroundings are challenged and blurred.

Location: The courtyards, ground floor (see p. 17-20)

- **Start Collecting with CHART:** an exhibition concept which focuses on opening up the discussion surrounding collecting art by presenting artworks by established and emerging artists beneath a fixed priced threshold of 20.000 DKK. CHART wants to make the purchasing process more transparent and encourage new collectors to participate, at all levels.

Location: Festsalen, first floor (see p. 17-20)

- **Music Programme:** This year's program aims to embrace the music scene broadly and give space to the newest voices from the Nordic music landscape—including DJs, solo artists, and groups. Around 17 artists will perform over the 3 public days of CHART. The pop-up stages, introduced in 2024, make it possible to integrate music into the urban space in a way that reaches new and broader audiences—spilling out onto Kongens Nytorv, rising up onto balconies, and into the hidden, secret corners of Charlottenborg.

Location: The courtyards, ground floor (see p. 17-20)

Stationary elements in the courtyards

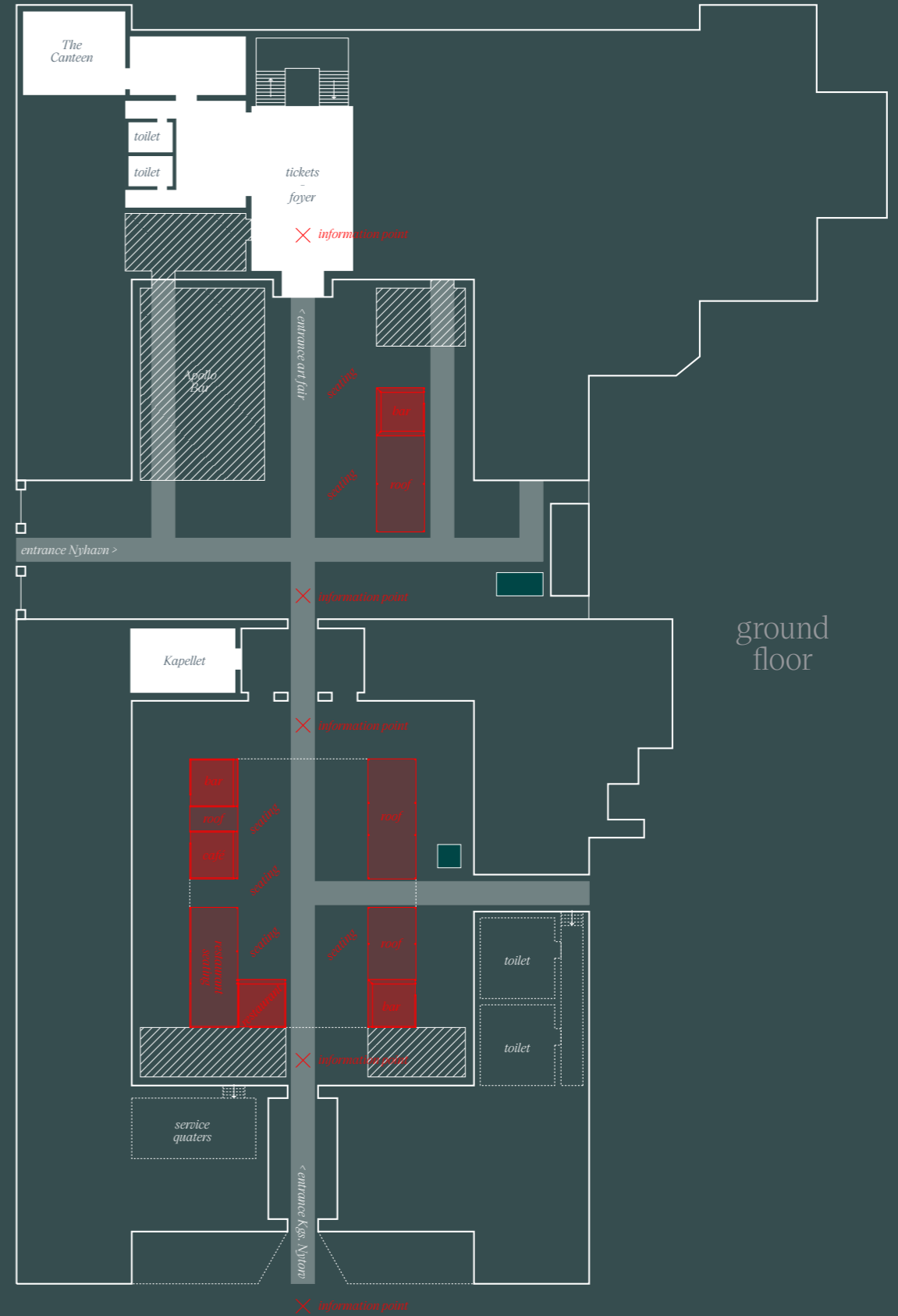
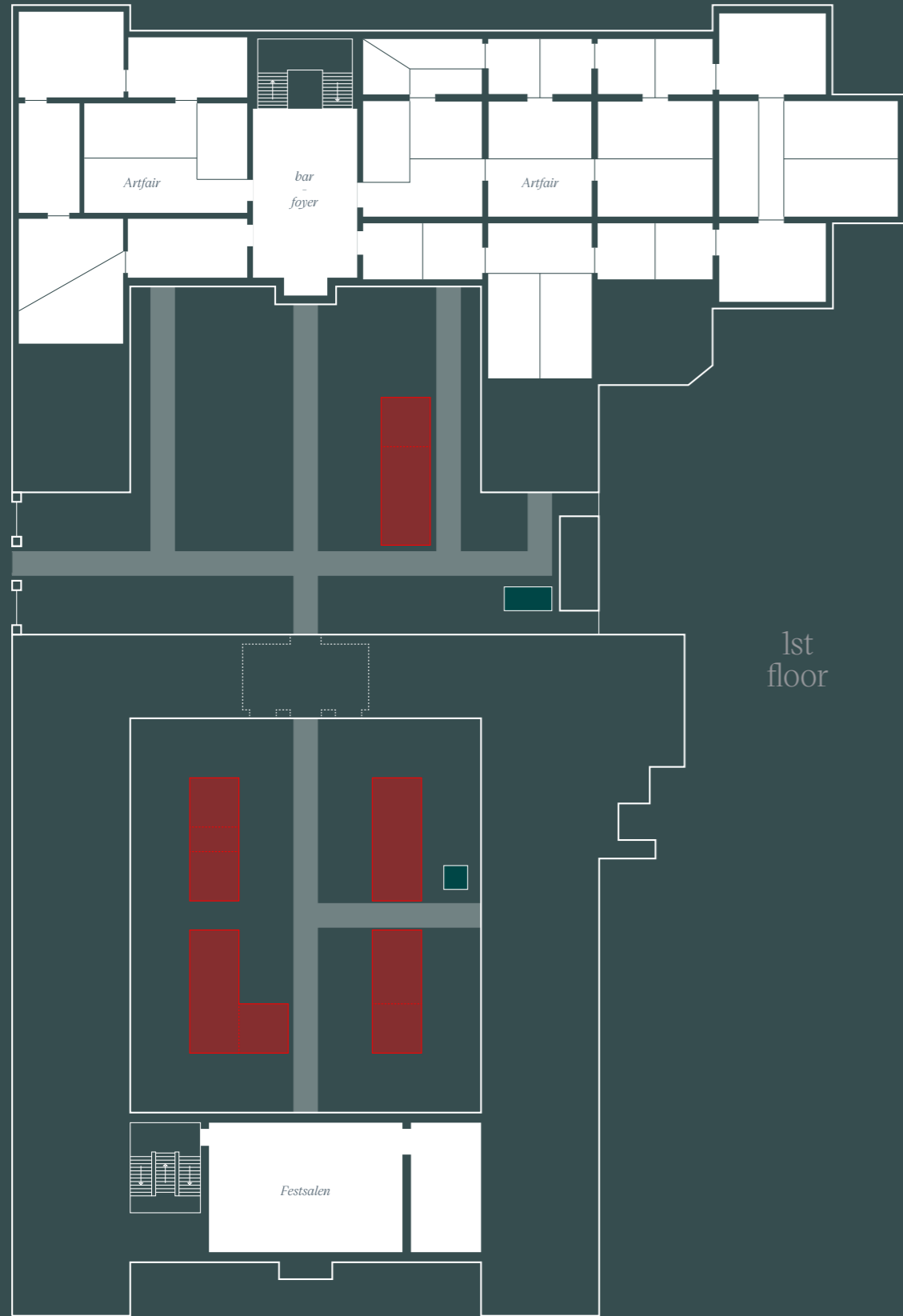
Bars, restaurants etc. have a fixed placement in the courtyards (see p. 17-20). All of these elements are made from a scaffolding structure - CHART is responsible for these. What is left for you to decide is how these should be wrapped, covered and/or staged. Furthermore you need to make suggestions for seating, information points and light design in the courtyards. Please make your suggested concept + placement of these clear in your proposal.

To be built / installed / produced

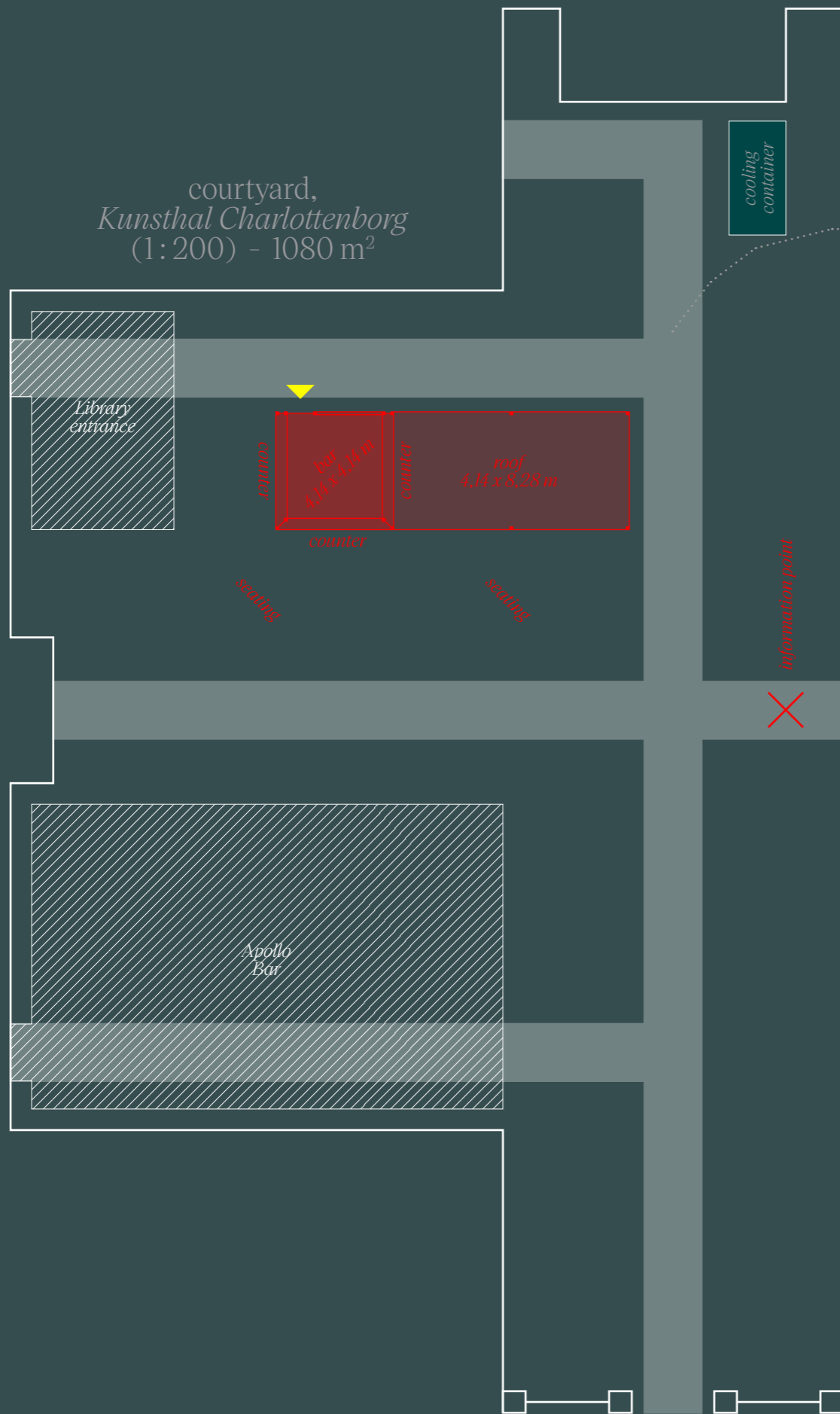
The 'physical elements' that your proposal should entail are the ones listed under this paragraph. Together they will create your suggestion for the overall visual experience of CHART Public whilst taking everything else written on this page into consideration:

- **Design for the skin of the various scaffolding structures**
- **Design of information points** (not graphic design, but 'signage design')
- **Design of spatial elements for seating / hanging out**
- **Light design** (day and night)

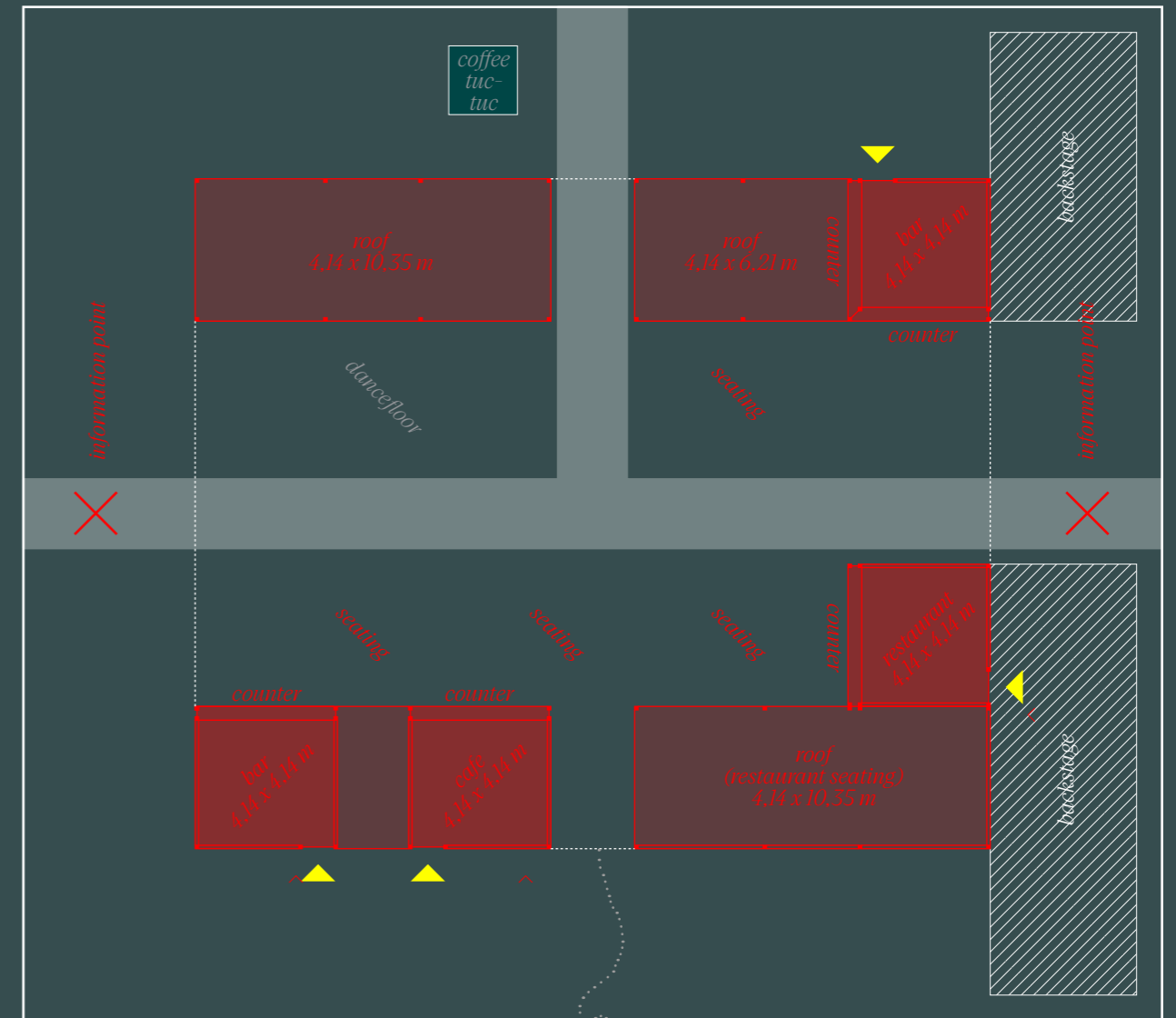
CONTEXT



courtyard,
Kunsthil Charlottenborg
(1:200) - 1080 m²

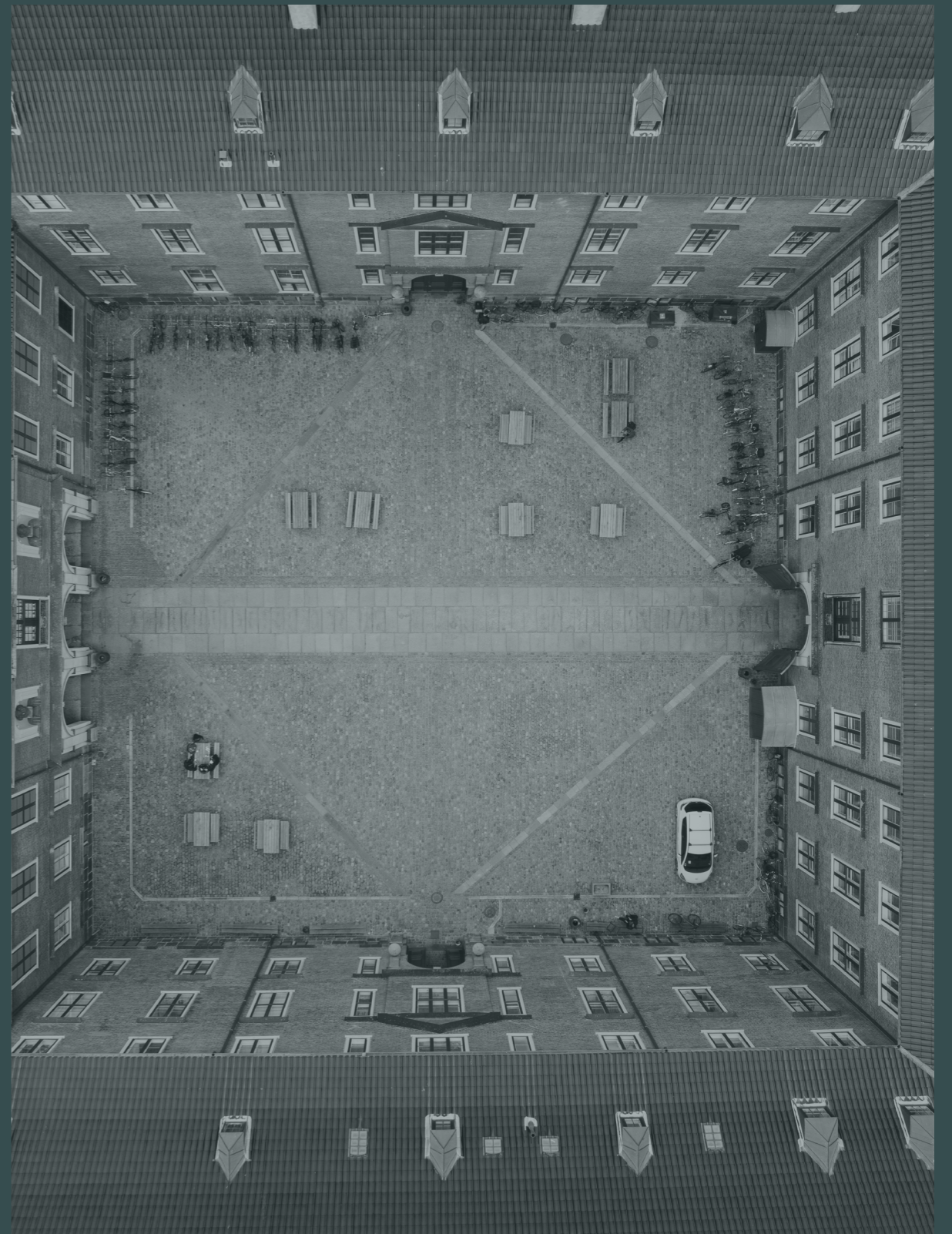


courtyard,
The Royal Academy of Fine Arts
(1:200) - 1042 m²



fire road
must not be blocked

this dotted
line is a 5 metres
fire protection line -
this space must not
be blocked



REFERENCES



Balenciaga, SS-2020



Elena Rocabert, Floating River



Liisa Lounila, Passing By



Jacquemus, Le Coup De Soleil



Christ & Jeanne-Claude, Wrapped Trees



Unknown



Jens Settergren, Milk Plus



Kris Martin, Mandi XXI



Foss x BOYY, Salone 2022



Martin Boyce, Diffusion Screen



Olafur Eliasson, Riverbed



Unknown



Even Buyer Store, Jiangjie Design



Henrik Vibskov, SS-2024



ELICA, Intervento Ambientale



Erased Studio, Singular Night

REQUIREMENTS

General requirements

The proposal should be designed to withstand inclement weather conditions.

The proposal must not damage or alter the courtyards and listed buildings of Charlottenborg. The proposal must be free-standing and cannot be fastened to the ground or the surrounding buildings.

Please note that build-up is 2 weeks whereas deinstallation is only 3 days. This means that take-down should be taken into consideration when the proposal is designed.

Who can apply? The competition is open to:

- **Designers, scenographers, set-designers, artists and architects.**
- It would be preferred that all or most team members are **based in Denmark.**
- Team members must be prepared to **travel frequently to Copenhagen at their own expense.**
- **Cross-disciplinary** teams are encouraged.

Build-up and budget

The 1 team selected by the jury is responsible for ensuring that their design is of the highest quality in terms of construction, and will be on site and responsible themselves for the build-up process.

After being selected as the winner on 06 May, the winning team will be guided through the process of refining and ultimately realising their idea.

In this process, CHART will supply carpenters and builders to consult with the winning team during installation, however, the responsibility for construction ultimately sits with the chosen team. This means responsibility for ensuring their proposal is structurally sound and finished within budget and the given on-site time frame.

- The winning team will be given a production budget of up to 100.000 DKK ex. VAT. This amount has to cover all parts of the production process including transportation and build-up, dismantling and removal.
- The 100.000 DKK ex. VAT should not cover the cost of the scaffolding structures as this is covered by another budget.
- The work of the winning team is and will be owned by the winning team. This means CHART will not store or assume ownership for any pieces. However, should the project be used in the future, CHART should be mentioned as a collaborator.
- The winning team will be given a fee of 25.000 DKK for their work.

The winning team is encouraged to seek sponsorships for additional funding and/or building materials where required.

SUBMISSION

Deadline: Sunday 26 April at 23:59 (CET)

Email submissions to: public@chartartfair.com

Please note that “Document 1” should be anonymous and not contain names or contact information of the team members.

All documents should be max. 10MB in total and all text should be written in English.

Submissions must contain the following 3 files in order to be considered:

Document 1

A3 sheets (max. 5), named: ‘*title of project*’_A.pdf

- Title of project (*team name*)
- Plan, section and facade elevation
- Perspective views
- Drawings, images and diagrams supporting your idea
- Concept text for press (max. 150 words)

Document 2

A4 sheets (max. 5), named: ‘*title of project*’_B.pdf

- Title of project (*team name*)
- Full name and education details, including year of graduation, of all team members
- Email and phone number for all team members
- Name of team member responsible for budget

Document 3

3 jpg’s for press use, named: ‘*title of project*’_C.jpg

- Choose the three images that is most characteristic of your design to use for press

Upload

Email files A, B and C with the subject line:

- ‘*title of project*’ - CHART Public 2026

KEY DATES

Competition timeline

April / May 2026

- 16.04.26 Thursday 12:00 (CET)
Commencement of 10 day competition
- 26.04.26 Sunday 23:59 (CET)
Submission deadline
- 04.05.26 Monday 10:00 - 14:00 (CET) -
Conversations between selected finalists and jury
- 13.05.26 Wednesday 12:00 (CET)
Winner announced

Design development with selected finalists

May / June 2026

- 13.05.26 Kick-off meeting between winning team and CHART
- 20.05.26 First round of municipal building permit application
- 09.05.26 Midway evaluation with CHART staff and jury
- 24.05.26 Second round of municipal building permit applications

Construction phase and CHART opening

August 2026

- 17.08.26 Monday 09:00 (CET)
Commencement of construction phase
- 23.08.26 Sunday 20:00 (CET)
Completion of construction phase
- 27.08.26 CHART 2026 opens to the public
- 30.08.26 CHART 2026 closes

Disassembly phase

September 2026

- 31.08.26 Monday 09:00 (CET)
Commencement of disassembly phase at Charlottenborg
- 02.09.26 Wednesday 20:00 (CET)
Completion of disassembly phase at Charlottenborg

Note that the winning team is requested to be on site working during all of the construction- and disassembly phase.

CHART

27 Aug – 30 Aug 2026

In case you have further questions,
please do not hesitate to reach out to:

Katrine Morel
Project manager & jury member, CHART Public

+45 2859 2270
public@chartartfair.com

Open Call
CHART PUBLIC 2026